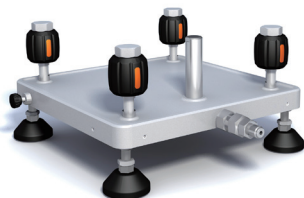


# Pressure Manifolds

## Additel 12X Series

The 12X series pressure manifolds are designed for expanding pressure test ports during pressure calibration. The Additel 121 pressure manifold is used for pneumatic pressure calibration up to 3,000 psi (200bar), while the Additel 123 manifold is compatible to hydraulic pressure applications up to 15,000 psi (1,000 bar). A filter is built-in with the 121 pneumatic pressure manifold to prevent contamination introduced by devices under test. There are four hand-tight quick connectors pre-installed on each manifold. Additel 12X series pressure manifolds allow you to connect without the use of wrenches or Teflon tape which increases your productivity when using calibration pumps, pressure controllers, dead weight testers, or piston gauges.

### 121 series Pressure Manifolds Pneumatic, -15 psi to 3,000 psi (-1 to 200 bar)



Model	Description
ADT121-N	1/4NPT male hose to four 1/4NPT female hand-tight quick connectors
ADT121-N2	1/2NPT male hose to four 1/2NPT female hand-tight quick connectors
ADT121-M	M20x1.5 male hose to four M20x1.5 female hand-tight quick connectors
ADT121-B	1/4BSP male hose to four 1/4BSP female hand-tight quick connectors
ADT121-B2	1/2BSP male hose to four 1/2BSP female hand-tight quick connectors

### 123 series Pressure Manifolds Hydraulic, -15 to 15,000 psi (-1 to 1,000 bar)



Model	Description
ADT123-N	1/4NPT male hose to four 1/4NPT female hand-tight quick connectors
ADT123-N2	1/2NPT male hose to four 1/2NPT female hand-tight quick connectors
ADT123-M	M20x1.5 male hose to four M20x1.5 female hand-tight quick connectors
ADT123-B	1/4BSP male hose to four 1/4BSP female hand-tight quick connectors
ADT123-B2	1/2BSP male hose to four 1/2BSP female hand-tight quick connectors

### 127 series Pressure Manifolds Pneumatic, -15 to 3,500 psi (-1 to 250 bar)



Model	Description
ADT127-N	1/4NPT male hose to three 1/4NPT female hand-tight quick connectors
ADT127-N2	1/2NPT male hose to three 1/2NPT female hand-tight quick connectors
ADT127-M	M20x1.5 male hose to three M20x1.5 female hand-tight quick connectors
ADT127-B	1/4BSP male hose to three 1/4BSP female hand-tight quick connectors
ADT127-B2	1/2BSP male hose to three 1/2BSP female hand-tight quick connectors

*Note: A test hose is included with every Additel 12X pressure manifold.*